

# Combo Aqua™

Hygienic drinking water  
Security Tanks



# Combo Aqua™

Whenever temporary water supplies are needed



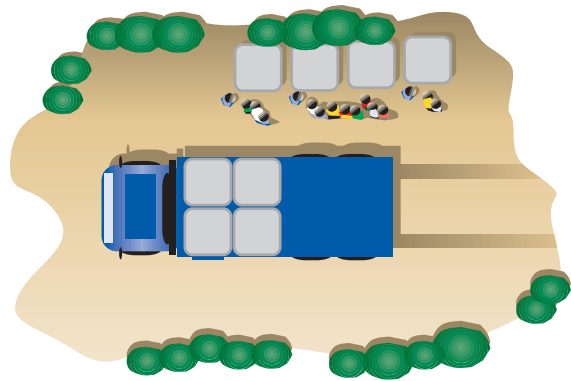
*Sudden loss of drinkable water may occur for a number of reasons: accidents, water mains cuts, drought, flooding, pollution, terrorist attacks etc.*

## Single tank deployment

In a problem or crisis situation, immediate access to clean tanks (and tanker trucks) is often a severely limiting factor in the water distribution work. Combo Aqua Security Tanks are always clean and ready for immediate deployment. They have on thousands of occasions provided fresh drinking water to stricken areas. Easy to handle, easy to transport on many types of vehicles.



## Satellite tanks



With Combo Aqua you can create a number of distribution points in a short period of time.

More distribution points mean shorter distances for consumers to collect drinking water, less time spent queuing up and generally a quicker coverage of a larger area.

Using standard, flatbed trucks for deploying Combo Aqua to a number of locations is the most effective method. Scarce assets such as clean tanker trucks can then be used for refilling the Combo container. Sending tankers directly is ineffective. They will often be standing at one distribution point until their water is depleted.



# Security

Folded, sealed plastic water liners form the container



Arca Systems is certified in accordance with quality assurance ISO 9001.

- Combo Aqua is manufactured of food proof Polypropylene and conform to US FDA regulations
- Combo Aqua is 100% recyclable
- In case of any damage all parts are individually replaceable
- Water liners and taps are made from materials conforming to applicable EU and other regulations for contact with food and water
- Liner tests to conform to German DVGW W270 standards on-going
- Liner tests to conform to German KTW standards on-going

## A fully closed system

- No rust, no dust, no residues
- No mould fungus, no rot
- No insects or animals getting to the water
- No airborne bacteria



Guarantee

Arca Systems takes complete responsibility for the plastic. When you purchase new products from us, we will help you dispose of the old containers.



### Water works, Water distribution companies, Municipalities

More than 130 Combo users across 7 countries in Northern Europe.

### International and national rescue services, NGO's, armed forces:

Germany: THW  
 Sweden: SRV  
 Denmark: Beredskabsstyrelsen  
 International: Major NGO's

### Emergency missions

Somalia	Zaire
Liberia	India
Eritrea	Ethiopia
Afghanistan	Macedonia
Eastern Timor	Poland
Rwanda	Guinea
Angola	El Salvador
Kosovo	Iraq

# Easy handling

A simple, practical system for water supply



Raise the walls of the Combo Aqua container. Make sure they interlock properly.



Insert a fresh new liner when you go on a new mission.



Snap gland adapter into place.



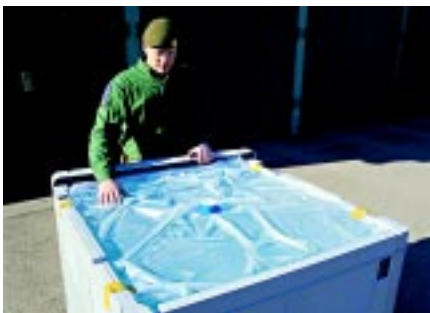
Low pressure filling: form the liner into a cube using attached adhesive tapes. High pressure filling from top or bottom: attach filling hose.



Apply lid and lock. Move/transport the container to the selected discharging.



Arriving on site, insert the tap and distribute water. The tap in the picture has a simple flow control device designed for forming a narrow water jet.



## Tight, opaque liners – for safer control

The liners hold the water securely in the tanks, expanding and collapsing as the tank is filled, emptied and refilled. By removing the container lid you can easily control the level. Also and importantly, you can actually see down into the water. This means you can spot early signs of bio-film forming or other problems in the water. If problems are detected, replace the liner with a fresh one at the next filling opportunity.

## Easy to transport and to store

After the mission, liners are normally scrapped. They are often burnt which causes no harm to the environment. The container is folded down, the lid is put back on, locked and the package is stored away. Taps are cleaned and saved for the next mission.



Combo Aqua are delivered folded and stacked five high for ease of storage in a small place.



# Emergency situations

Demand a system with maximum flexibility



*Combo Aqua are designed to fit on most flatbeds, large and small. They also fit perfectly inside 20 ft. or 40 ft. steel containers.*

*Sometimes only limited space is available. A small "water tower" can be built, 3 tanks high (maximum), which will hold 3 m<sup>3</sup> of water in just 1.33 m<sup>2</sup>.*

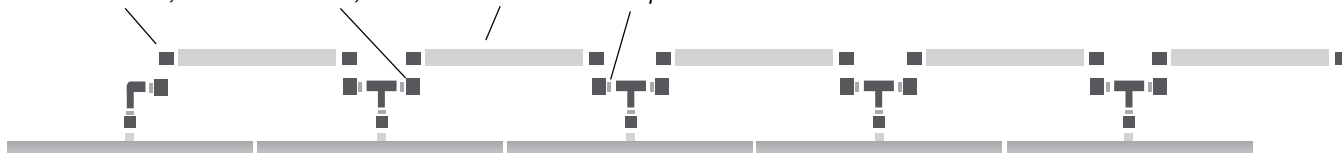
## Serial connections

Volumes may be adjusted to the needs of the individual situation. Serial connections, either horizontally (max five tanks) or vertically (max three tanks) can be used and allows the filling or discharging of several tanks from a common point.



*Two rows, each of five Combo tanks, will convert a regular flatbed truck into a clean tanker truck at a comparatively low cost.*

Camlock, male    Camlock, female    Waterhose    Adapter

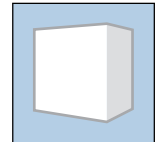


# Climate control equipment

Every situation has its own needs



Summer  
Camouflage



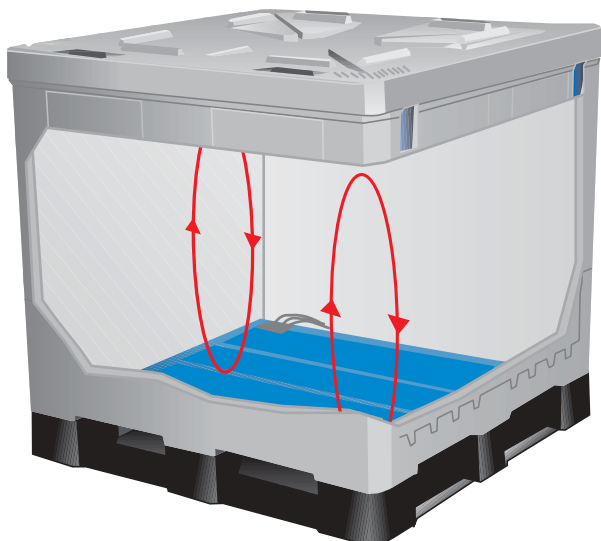
Winter  
Camouflage



Heat  
Deflection

## Cold or hot conditions – Combo Aqua must be operational

Our containers are in active service on many continents and in all types of weather. They are used by civilian units, such as water works, water distribution companies, by national and international rescue services and by armed forces. They need to function in any situation. Extremes of climate are usually managed using "thermo covers". Our covers, in five layers (PP fabric, PE foam, Aluminum, PE foam, PP fabric), are reversible with one side army green and the other side white. They prevent the water from freezing in winter and keep the water cool in the summer or under tropical conditions.



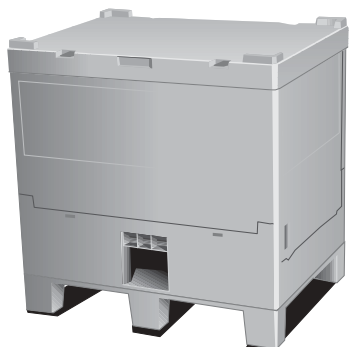
## Electric heating mat

For arctic conditions, the Combo Aqua can be fitted with an electric heating mat, which prevents or slows down the formation of ice. The mats are placed in the bottom of the container, between the container base and the water liner. Heating the water from below creates a convection current inside the liner. The heating is controlled by a thermostat.

### **Electric heating mat**

*Integrated heating circuits: 600 W with cables for 24 V (truck)  
+ 600 W with cables for 230 V (In the US 110 V).*

# Combo Aqua security tanks



**4430.500** Combo Aqua 65  
 External: 800 x 600 x 833 mm  
 31.5 x 23.6 x 32.8 inches  
 Internal: 740 x 540 x 660 mm  
 29.1 x 21.3 x 26.0 inches  
 Weight: 21.0 kg, incl. lid  
 46.3 lbs, incl. lid  
 Volume: 250 litres  
 65 US Gallons  
 Colour: Grey

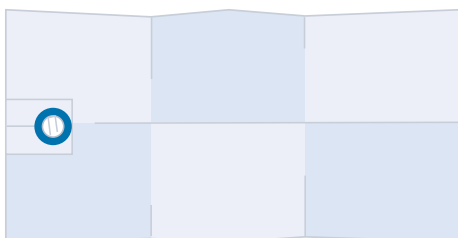


**4420.500** Combo Aqua 285  
 External: 1145 x 1145 x 1132 mm  
 45.1 x 45.1 x 44.6 inches  
 Internal: 1065 x 1045 x 940 mm  
 41.9 x 41.9 x 37.0 inches  
 Weight: 88.5 kg, incl. lid  
 195.1 lbs, incl. lid  
 Volume: 1060 litres  
 285 US Gallons  
 Colour: Grey



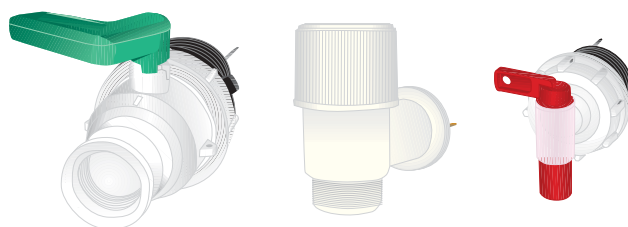
**4440.500** Combo Aqua 300  
 External: 1220 x 1120 x 1132 mm  
 48.0 x 44.0 x 44.6 inches  
 Internal: 1140 x 1040 x 978 mm  
 44.9 x 40.9 x 38.5 inches  
 Weight: 102.0 kg, incl. lid  
 225 lbs, incl. lid  
 Volume: 1135 litres  
 300 US Gallons  
 Colour: Grey

## Liners



Original liners for use with Combo Aqua are made from food grade LDPE. They comply with applicable EU and other regulations for contact with food and water.

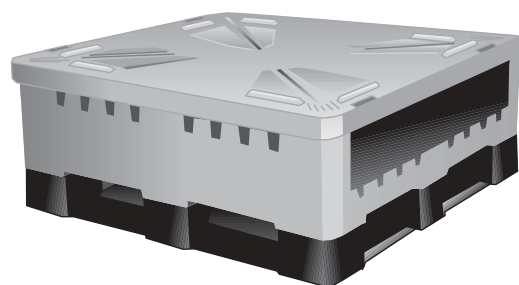
## Taps



A multitude of taps can be used with Combo Aqua. The taps we offer or recommend are all made from materials in compliance with regulations for contact with food and water from EU or the U.S. FDA.

## Pallet benches

Combo Aqua can be deployed anywhere, at a moment's notice. No preparations are needed. In many cases, elevating the tanks a little above the ground makes it easier to draw water from the lower tap. Often a few standard wooden pallets will do the job. However, following demand from our customers, we also offer separate pallet benches, which raise the containers to a comfortable height.





For further information on Arca System's extensive range of products, please request a copy of our comprehensive materials-handling catalogue or visit our homepage at [www.arcasys.com](http://www.arcasys.com)



**Austria.** Phone +43 2622 206 56-0. Fax +43 2622 206 56-21. **Benelux.** Phone +31 478 530 070. Fax +31 478 630 610. **Czech Republic.** Phone +420 69 660 33 60. Fax +420 69 660 33 61. **Denmark.** Phone +45 32 53 85 77. Fax +45 32 53 89 77. **Finland.** Phone +358 3-848 211. Fax +358 3-848 2350. **France.** Phone +33 474 76 79 47. Fax +33 474 76 79 70. **Germany.** Phone +49 385 6452-0. Fax +49 385 6452-222. **Great Britain.** Phone +44 1235 863 800. Fax +44 1235 822 442. **Italy.** Phone +39 055 583 616. Fax +39 055 579 841. **Latvia.** Phone +371 738 22 80. Fax +371 738 22 81. **Norway.** Phone +47 22 73 22 18. Fax +47 22 52 38 50. **Poland.** Phone +48 22 870 12 24. Fax +48 22 870 12 30. **Russia.** Phone +7 812 326 65 20. Fax +7 812 326 65 21. **Slovakia.** Phone +421 2 555 659 40. Fax +421 2 555 659 41. **Spain.** Phone +34 968 68 75 19. Fax +34 968 69 05 52. **Sweden.** Phone +46 435 77 70 00. Fax +46 435 77 70 99. **USA.** Phone +1 253 582-0644. Fax +1 253 588-5539.

**E-mail:** [info@arcasys.com](mailto:info@arcasys.com) **Internet:** [www.arcasys.com](http://www.arcasys.com)

For general information and in case of EMERGENCY worldwide, please contact in English:

**Combo Aqua International Centre:** [info@combosys.com](mailto:info@combosys.com), [emergency@combosys.com](mailto:emergency@combosys.com) **Internet:** [www.combosys.com](http://www.combosys.com)

**Phone:** +46 8 592 510 75 **Fax:** +46 8 592 557 71